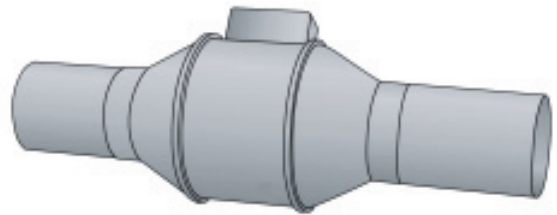
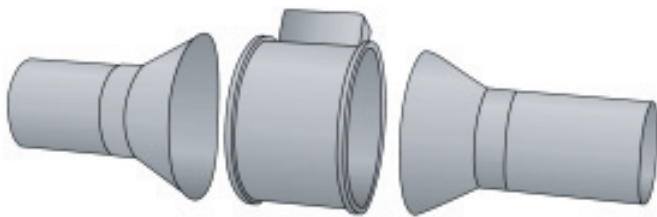


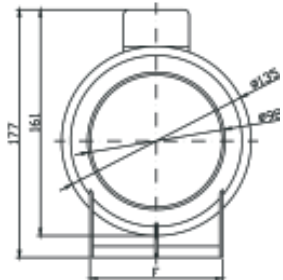
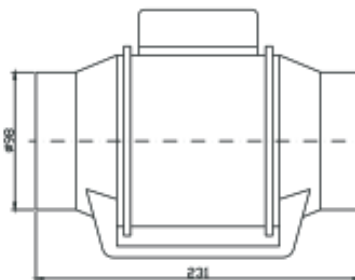
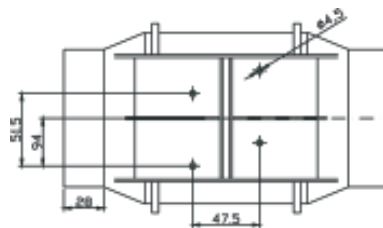
EINBAUANLEITUNG TURBO 100

DOSPEL Rohrventilator Kunststoffausführung

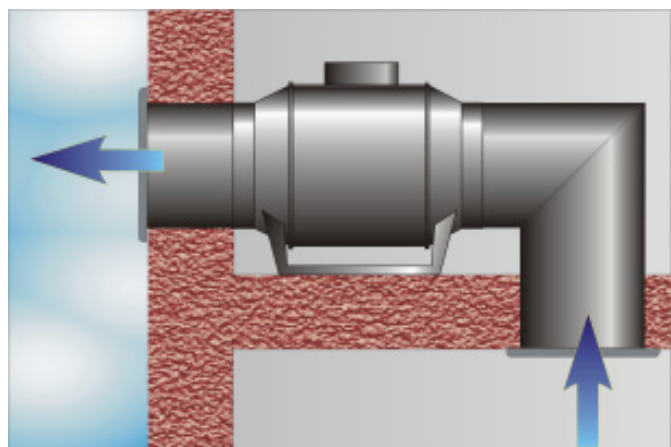
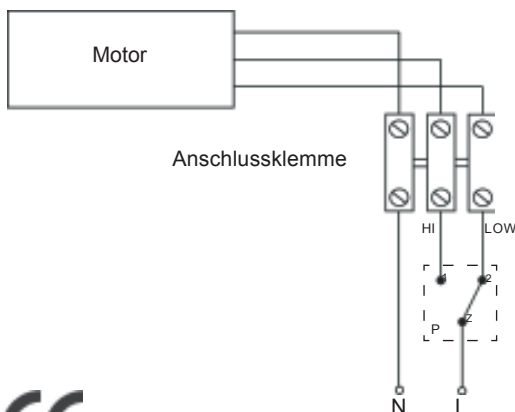


Technische Daten

Nennfördermenge	140/160 m ³ /h
Statischer Druck	60/72 Pa
Abluftstutzen	100mm - rückwärts
Betriebsgeräusch	14/18 dB(A)
Strom	230V, 50Hz, 0.12A, 15W
Nenn Drehzahl	2500/2100 U/min
Schutzklasse	IPX2
Lagertyp	Kugellager



Elektroanschluss



LIMOT

Elektromotorenbauges.m.b.H. & Co.KG 4060 Leonding
Paschinger Straße 56
Tel. +43 (0)732 67 13 56-0
Fax +43 (0)732 67 13 57-3

1090 Wien
Prechtlgasse 9
Tel. +43(0)1 408 28 72-0
Fax: +43(0)1 408 28 72-22

